

Taking Flight

HTPA Supports You

Build, Support, and Expand Your Healing Touch Practice

2015 Annual Report for the Healing Touch Professional Association

Letter from the Acting Executive Director

Welcome aboard the HTPA 2015 Annual Report!

Our organization had been in the hearts and minds of the founding members with years of prior planning and strategic organization, yet officially we launched on April 1, 2008. Happy Seventh Birthday, HTPA!

With the support and blessing of Healing Touch Program, Sharon Robbins, our late Founding Executive Director, set out first and foremost to transport HTPA members and practitioners into the unknown territory of liability insurance. At that time, there was no way to obtain liability insurance that represented the energy medicine industry. Sharon was completely successful at navigating the seas of professional protection. From there, Sharon's vision manifested a variety of member benefits uniquely designed to meet the requested needs of HTPA members.

HTPA weathered the sudden shock of Sharon's death last August. While we continue to carry a mark on our hearts from that bumpy experience, we have each moved through as time has allowed.

This report is an opportunity for me to share with you the highlights of HTPA's 2014 successes!

2014 Highlights and Successful Adventures

- The Insurance Initiative Committee found the necessary steps needed for the application process for possible compensation via third party billing.
- HTPA Chapters continued to form across the country.
- Volunteers offered support in our communities.
- Laughter and tears were shared at our conference.

I am thrilled to take off with you into the new HTPA year ahead. Hold gently onto my hand and rise up with me – together, let us learn how to BUILD, SUPPORT, and EXPAND your Healing Touch practice. There are numerous programs already set in place to support your professional growth. Together we can make a difference in the future development of HTPA.

YOUR membership and voice in HTPA will continue to bring HTPA's vision forward as together we Build, Support and Expand the profound foundation laid by Sharon Robbins.

Enjoy your flight.



Dawn

Dawn Warnaca, HTCP/I
HTPA Acting Executive Director
www.HTProfessionalAssociation.com





Once you have tasted flight, you will forever walk the earth with your eyes turned skyward, for there you have been, and there you will always long to return.

- Leonardo da Vinci



Tribute to Sharon

Sharon Robbins, former HTPA Executive Director, lived a life that epitomized service, commitment, loyalty, compassion and unconditional love. Her ready smile, calm demeanor and easy laugh made her a pleasure to be with because she was a truly joyous person. But she was more than just a wonderful person. She was a friend, mentor, leader, role model, teacher and champion of Healing Touch. Sharon was a huge influence in our community and world.

Sharon's love for HTPA is clearly evident in the work she did to bring about her vision that "Healing Touch practitioners are fully recognized as vital professionals in all aspects of health care." She was dedicated in her efforts to bring community together and to raise the professional standards for our practitioners. Due to her determination and tenacity, we offer liability insurance for students, practitioners and instructors of Healing Touch, as well as for other healing modalities. She instituted Community Connections Volunteer Bank, monthly Business Support calls, Healing Touch service for the military, Healing Touch disaster response and the formation of local HTPA Chapters. Sharon also initiated, and at times wrote, the Practitioner Support Column in Energy Magazine.

Sharon was instrumental in creating a Healing Touch Worldwide Foundation (HTWF) designated fund for HTPA. Her vision was to make it possible to bring Healing Touch volunteer services and special interest projects to local and worldwide communities. She was also a member of the HTWF marketing committee and worked to promote HTWF's mission.

We profoundly miss her leadership, guidance, cheerleading, loving encouragement and friendship. Sharon's presence and influence in the growth of Healing Touch will be lasting.



HTPA Vision

Healing Touch Practitioners are fully recognized as vital professionals in all aspects of health care.

HTPA Purpose

- HTPA unites and gives voice to our Members while providing support for high level Healership and successful Healing Practice.
- HTPA offers all Healing Touch Students and Practitioners cutting-edge Professional and Business Development Tools.
- HTPA promotes adherence to the Healing Touch Program Standards of Practice and Code of Ethics.
- HTPA provides avenues for community building through *Community Connections*, offering opportunities to actively participate in Service Outreach, local Chapters and Networking.
- HTPA is a conduit for information regarding the new profession of Energy Practice, keeping our membership informed about new research, changes in health care delivery and legislative issues that affect their practice.

Accomplishments

- 1 Chapter growth provided local HTPA support in your area. In April 2014, there were 31 HTPA Chapters. As of April 2015, we have 47 Chapters. Way to grow!
- 2 HTPA encouraged military outreach by supporting our volunteers at events like Stand Downs and Veteran Reunions.
- 3 The Insurance Initiative navigated the complexities of third party insurance reimbursement and presented a comprehensive poster at the 2014 Healing Touch Worldwide Conference.
- 4 Educational opportunities were presented such as the Risk Management video course, 10 interactive business interviews, and 12 Let's Chat calls with colleagues.

Visioning A Healer in Every Home

SYNERGY

The creation of a whole that is greater than the simple sum of its parts.

What would it look like to live in a world where there was a healer in every home? Why don't we start now to visualize this, teach this and talk about this as a reality? That is an option for our communities.

Consider the success of cardiopulmonary resuscitation (CPR) and teaching not just doctors, nurses and medical professionals how to save the life of someone collapsing from possible cardiac arrest. Lay people across the country are taught this skill in a one-day class. CPR is even mandatory in many places of employment. Can you imagine Healing Touch might one day be a mandatory class where your spouse works, with a refresher required every two years? Why not?

Who would have thought that Massage Bars could pop up at airports of all places? Why not Healing Touch Bars? What about all those coffee stands – drive up, get your morning cup of caffeine. What if a Healing Touch practitioner took the afternoon and early evening shifts – on your way home, you could swing in for a 15 minute Skudder or Mind Clearing. OK, yes, you might have to do a bit of remodeling. And yes, they would have to get out of their cars – but look at the corporate buy-in to massage. Think Massage Envy. We too have a service that is worthy of getting out to the masses. We just need to explore avenues of how to do it.

How do we get a Healer in Every Home?

We start by coming together, uniting under the common umbrella of Healing Touch, and growing from the foundation of our Professional Standards. By joining HTPA, your voice is included as Healing Touch is represented through our professional organization. HTPA is bringing professional development and continued education to our community.

A healer in every home begins with you. Healing Touch Professional Association provides the vehicle for you to actively participate, give input and ideas while receiving benefits and support. Get involved, join the calls, join events and be a part of Community Connections to share in the future of Healing Touch.

A healer in every home becomes more and more possible with your membership in Healing Touch Professional Association.



HTPA Insurance Initiative

Supporting Your Profession 

PAST: HTPA members have been having a conversation around the possibility of third party billing for Healing Touch for years! In early 2013, HTPA sponsored a committee of seven interested practitioners to research this complex process. Various members of this committee have continually updated us through articles in Energy Magazine and the HT Community News.

There is also a designated web page. Please visit www.htprofessionalassociation.com/insurance-initiative-committee.

PRESENT: The Healing Touch Insurance Initiative Committee (HTII) has successfully submitted the application for a Health Care Provider Taxonomy Code in order to get a National Provider Identifier (NPI #) for Healing Touch. The Committee is now taking steps to apply for a Healing Touch Current Procedural Terminology (CPT) code of its own. CPT codes describe a medical procedure or service supplied by a healthcare provider. This involves a complex application to the American Medical Association (AMA) that will take time to reach an end result. But the Committee is optimistic and has the blessing of Healing Touch Program.

Chris Gordon at HTP recently joined the Committee and is consulting and supporting the completion of the CPT application. Dr. Steve Sutton also joined the Committee and will be very instrumental in the success of our CPT Code application to the AMA.

FUTURE: Vision for the Healing Touch Insurance Initiative Committee

Healing Touch Certified Practitioners will have the option to be compensated via third party payers due to the recognition that Healing Touch is a complementary energy medicine modality with a history of therapeutic results based on research and evidence-based outcomes. This will increase client access to the Healing Touch modality for health and wellness.

AND ALWAYS - Thank You to our committee members for all they have done and continue to do to move Healing Touch toward professional recognition in our current cultural climate that uses insurance as one tool toward health, healing and wholeness. If you have any information you think would help this Committee, please send an e-mail to info@HTProfessionalAssociation.com.

Committee Members

Gail Cox (IL) – Co-Chair, RN, CHT, HTCP/I, CMT
Holli Brown (WA) – Co-Chair, BSEE, LMP-NCTMB, HTCP
Irene Bigot (CO) – RN, BS, MS, HTCP, Certified Spiritual Director
Brenda C. Fister (CO) – RN, BSN, HTCP, CFSP Holistic Health Coach
Marie “Danielle” Leblanc (ME) – RN, BSN, HTCP/I
Chris Gordon (TX) – HTP CFO, General Manager
Dr. Steven Sutton (AZ) – MD, FACS, HTCP

So never lose an opportunity of urging a practical beginning, however small, for it is wonderful how often in such matters the mustard-seed germinates and roots itself.

— Florence Nightingale

HTPA Provides Professional Resources

Education

- Monthly business interviews
- Risk Management video series
- E-manual for Stand Down volunteers
- Colleague to colleague monthly "Let's Chat" support calls
- Surveys to hear and learn members' needs
- Access to and education about other heart-centered organizations through our Collaborative Alliances

Community

- Resources for group development such as state and regional phone calls
- Local Chapter support through HTPA
- Presence at regional conferences
- HTPA representation at affiliated organization conferences
- Forum board for sharing ideas
- Community Connections membership for volunteer opportunities
- Collaborative Alliances
- Articles in newsletters and reports
- Service to the military
- Communication with HTP

Benefits and Discounts

- Discounts on conferences, classes, online webinars and business support programs
- Liability insurance for your practice through HTPA
- Member Directory – networking with colleagues
- Practitioner Directory – public advertising for your practice
- Access to other practitioners and experts
- Professional development
- FREE listing on EMPI Practitioner Directory (\$120 value)

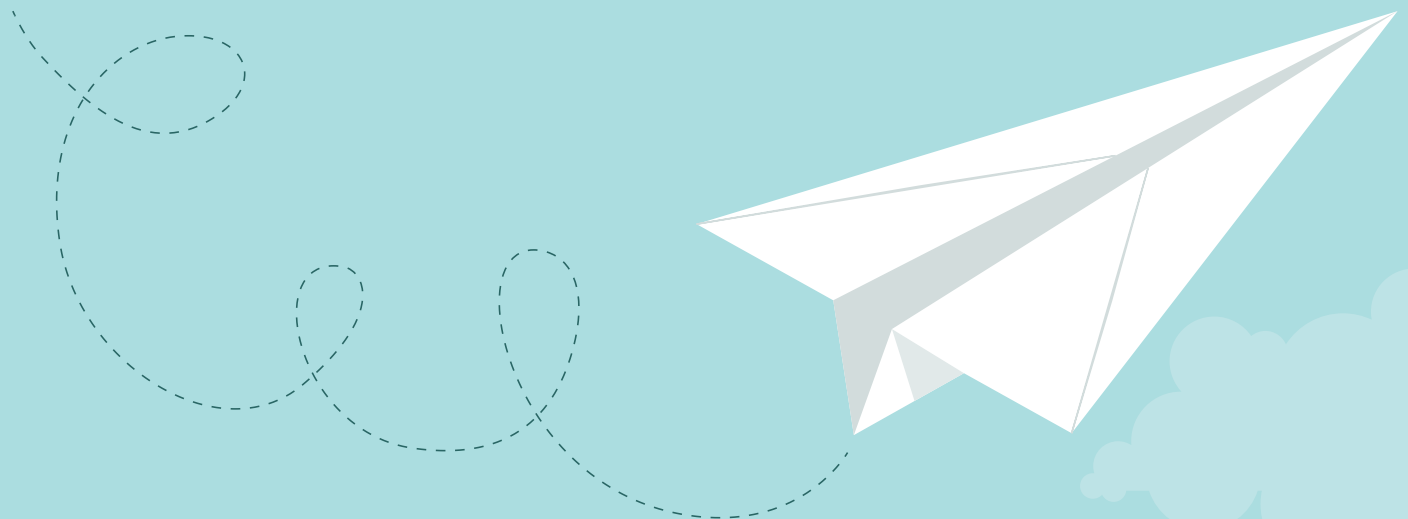
HTPA's Commitment to Our Members

EDUCATION: HTPA helps the student and practitioner of Healing Touch to be up to date on current topics. HTPA offers its members educational and supportive monthly opportunities to learn about energy medicine, best practices, professional development and other topics of interest. A video series was developed last year to help educate our members about how to manage business risk.

COMMUNITY: Building and maintaining a supportive community is vital to the development of your practice. Get involved in your local area by joining or starting an HTPA Chapter. HTPA offers a number of ways to get information about events and opportunities in the greater Healing Touch community. HTPA listens and helps you be heard.

BENEFITS AND DISCOUNTS: All HTPA members are eligible for class, event and product discounts when offered. HTPA also offers totally free events for members. HTP, ISHA and other organizations are offering HTPA discounts that quickly return the HTPA membership fee and save you money beyond. In addition, other affiliates are offering free products like e-books and webinars to members.

As you can see, HTPA is about serving its members, including their voice and giving them opportunities to share in the growth of Healing Touch, subtle energy and energy medicine while advancing forward to join with other professional associations. At the core, HTPA is a strong professional organization bringing cutting edge support and services to its members in a field that is rapidly evolving, at a time when uniting and joining together is more important than ever.



HTPA Member Benefits

By joining HTPA you raise your own personal professional standard.

Professional membership includes you in a body of like-minded individuals. It contributes to the expansion of your profession by creating a larger pool of power, thought, energy and forward growth. Being part of an organization that calls for member input, like HTPA does, offers you an opportunity to add your personal voice and support to shape the future growth and development of your profession. Even if you do nothing after joining, just by joining, you contribute and benefit for a very low financial cost.

Along with HTPA you become aligned with the evolution of the “New Science.”

Healing Touch has confirmed its place in the new medical model of Integrative Health Care. HTPA is committed to aligning with other organizations that teach and support their communities with the same high level of Ethics and Scope of Practice that Healing Touch Program has for the past 25+ years. By joining HTPA you are also aligned with those organizations - recognized by them and provided with access to them.

Members are eligible for Professional and General Liability Insurance. HTPA is one of the few avenues to subscribe to Liability Insurance through an energy-based program. Our insurance plan has been specifically tailored for energy practice and our customer service staff understands your specific needs.

HTPA members have a Member Only Forum Board and a public FAQs Blog.

Often practice questions come up and here is the perfect place to get answers from your peers. You can start a discussion or participate in an on-going discussion that is personal about your practice and have replies to it by others in your professional practice with or without the discussions being exposed to the general public. It's enlightening, educational, interesting and FUN!

You have a Member Directory that makes it easy to

network with others who are located near you, are like-minded and/or are practicing HT in ways that you would like to know about. The HTPA Membership has extremely accomplished individuals whose life experience, previous careers, business knowledge, HT practice, etc. make them an ideal source for inspiration, motivation, advice, mentoring, coaching, and collaboration. The HTPA Member Directory is a great source for Community; it's easy to use and easy to self-manage.

For all who feel they are “out there” forging new frontiers alone, HTPA

membership provides inclusion in a worldwide Community. Our HT Community is a global Community and all involved in Healing Touch are part of that. As a member of HTPA, you have a direct connection to the growth of HT in your own country of residence and in other countries around the world.

HTPA Members are eligible for class, event, and product discounts plus HTPA offers totally free events for members. HTP, ISHA and other organizations are offering HTPA discounts that quickly equate to a return of your HTPA membership fee and save you money beyond. HTPA currently offers events that are free for members to attend.

What we are doing is just a drop in the ocean. But if that drop was not in the ocean, I think the ocean would be less.

- Mother Teresa

Business Support and Resources are offered and continually expanding to help members who want to start and/or grow their business practice. Whether you are a student, practitioner, instructor, coordinator or volunteer who wishes to establish a business around your practice, there are basic business fundamentals needed to be successful. HTPA offers well established resources and services as well as continues to develop new ones to help its members grow their businesses.

Monthly “Live” Chats by teleconference or webcast. All are invited to discuss HT activities; practice issues; along with Questions and Answer time.

All HTPA members have an opportunity to participate in member surveys, votes and annual membership meetings. In a continual effort to give members a voice in the growth, development and direction of HTPA, member surveys are sent to all and the results are taken very seriously. Also, members are eligible to vote on important issues and attend the annual HTPA membership meeting. **We listen to our members.**

Expanding Special Interest Projects that offer active participation for members. HTPA has a broad offering of special interest projects on the horizon to engage its members in active participation. Some of these are Service to the Military – active, vets and family; Rapid Disaster Response Teams for both domestic and international response; Adopt a Country to address education and service to low-economic countries; Service to the Poor in the USA – a program to address the needs of those who cannot afford to receive energy therapies.

HTPA Chapters

PURPOSE & VISION - LOCAL HTPA CHAPTERS

Local HTPA Chapters allow Healing Touch students, practitioners and friends to create community, build pathways to participation in service projects and network in the Healing Touch Community. Chapters strive to support its members by strengthening skills, personal knowledge and professional growth while upholding adherence to the HTP Code of Ethics and Standards of Practice. Through these actions, HTPA Chapters and their members are spreading Healing Touch!



CHAPTER IDEAS/ACTIVITIES

Chapter Meetings – Each local HTPA Chapter decides how often they will meet and the activities of their meetings.

Chapter Projects – Ideas include establishing local HT Clinics; Service Days for the elderly, homeless, and military; Health Fairs; Brown Bag Presentations; Outreach to HT students and practitioners who have dropped out; Self-care Plans; and the Annual HTPA Membership Drive.

Chapter Newsletter – Create a local newsletter to communicate with your members and to encourage local HT practitioners to join.

Develop Special Interest Groups – Within your HTPA Chapter, you may have different interest groups like Business, Volunteer, Speakers, Networkers – it will be fun and exciting to join together to do what you love to do.

Influence Local and National Policy Makers – With HTPA's alignment with the Voice for Hope, there is training available to prepare participants to visit City, County and State Legislators to offer them help to support freedom of healthcare choices.

Group Discounts – HTPA Chapter members can participate together in social, travel and educational activities. Many conferences, seminars and retreats offer discounts for group registrations.

Explore Group Media Exposure and Advertising – It can be cost saving to join together to create a local group ad for activities, clients, classes and workshops. Press releases about your HTPA Chapter can be sent to your local media outlets about your activities.

CHAPTER SUPPORT

Quarterly Chapter Conference Calls – Join other Chapter Leads to brainstorm, share activity reports, ask how others have conducted their HTPA Chapter meetings and learn what makes HTPA Chapter meetings interesting and inviting.

Buddy Program – Start-up HTPA Chapters are paired with an established HTPA Chapter for support, tips and guidance.

Quarterly Chapter Newsletters – Explore meeting ideas and reports from other HTPA Chapters.

HTPA Website – Local HTPA Chapters and contact information can be listed on the website to promote Chapters.

Funding – If funds are raised by an HTPA Chapter, those funds will be kept by the Chapter to cover any operating costs; no dues are required from local Chapters.

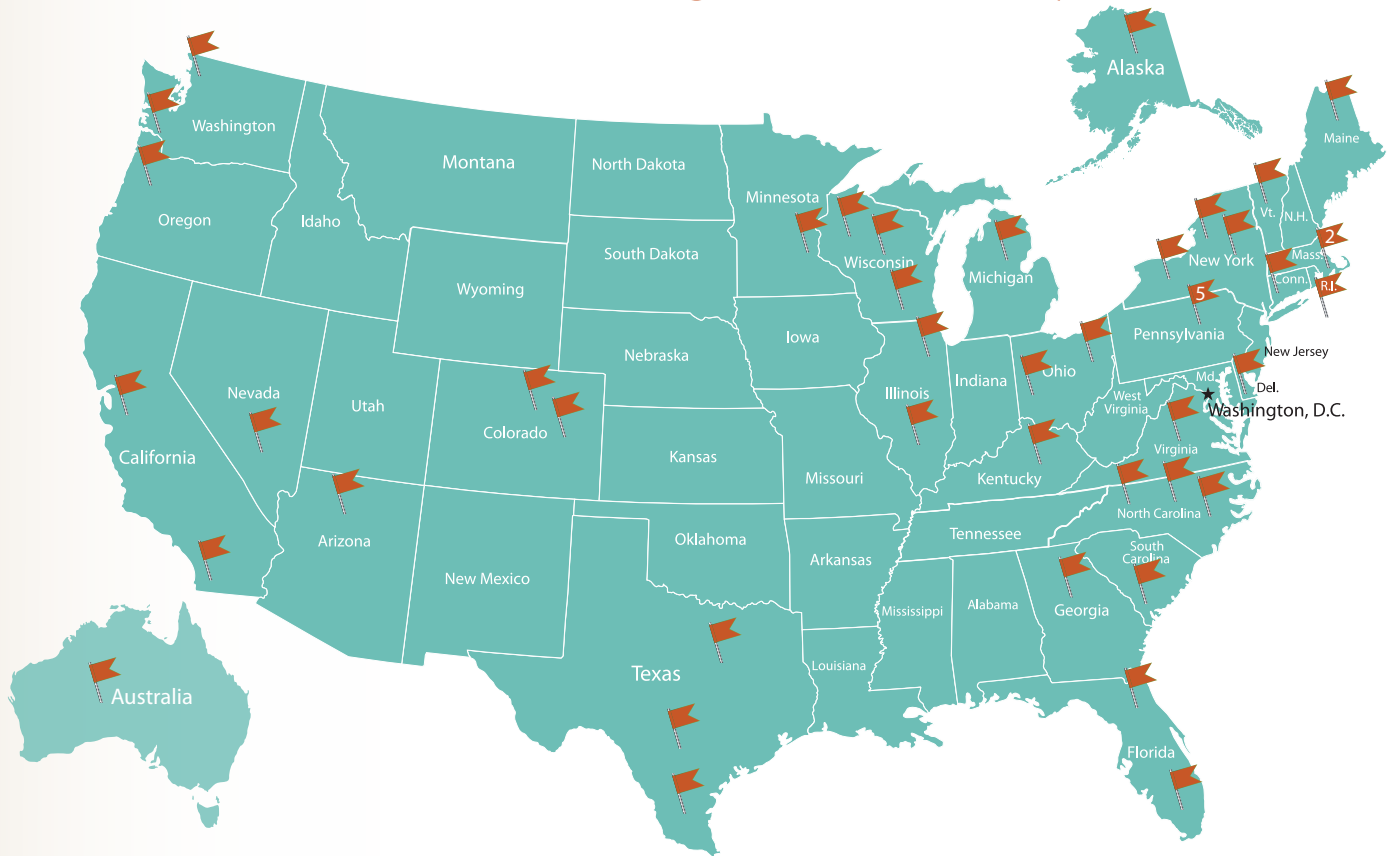
Information about Healing Touch and HTPA – A variety of continually expanding resources such as articles, research, class and event schedules and descriptions, and flyer templates are available to HTPA Chapters.

HTPA Chapters have at their core the essence of our HTPA motto: ***Together, we are the Heart of Healing Touch!***

Start your own chapter today!

Visit www.htprofessionalassociation.com/htpacc/local-chapters

Local HTPA Chapters Join in Building Community



Local HTPA Chapters as of April 1, 2015

For contact information see
www.htprofessionalassociation.com/htpacc/local-chapters

ALASKA
Anchorage

ARIZONA
Northern Arizona

CALIFORNIA (2)
1. Orange County
2. San Francisco, Bay Area

COLORADO (2)
1. Denver Area
2. North Colorado

CONNECTICUT
Greenwich

DELAWARE
Wilmington

FLORIDA (2)
1. Miami
2. Northern Florida

GEORGIA
Atlanta

ILLINOIS (2)
1. Central Illinois
2. Metro Chicago

KENTUCKY
Louisville

MAINE
Penobscot

MASSACHUSETTS (2)
1. Mass, Rhode Island, Vermont
2. North Shore Boston, and Coastal NH

MICHIGAN
Kalamazoo Area

MINNESOTA
St. Paul, Minneapolis, St. Cloud, and Rochester

NEVADA
Las Vegas

NEW YORK (3)
1. Mohawk Valley
2. Schenectady area
3. Southern Adirondacks

NORTH CAROLINA (3)
1. Charlotte
2. Triangle Region
3. Western North Carolina

OHIO (2)
1. NE Ohio
2. Freemont

OREGON
Portland

PENNSYLVANIA (5)
1. Central Pennsylvania
2. Greater Philadelphia and Suburbs
3. Lancaster
4. SE Pennsylvania
5. Susquehanna

RHODE ISLAND
Rhode Island, Mass, and Vermont

SOUTH CAROLINA
Low Country

TEXAS (3)
1. Central TX - Austin, Hill Country, San Antonio
2. North Texas
3. South Texas

VERMONT
Vermont, Mass, Rhode Island

VIRGINIA
Fredericksburg

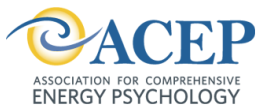
WASHINGTON (2)
1. Vancouver, WA + 30 mi radius
2. Western Washington

WISCONSIN (3)
1. Milwaukee Area
2. Eastern Shore, Fond du Lac, Ozaukee and Washington and Waukesha Counties
3. Western Wisconsin

WESTERN AUSTRALIA
Albany

Deepening Collaborative Alliances

H TPA has created robust partnerships with a number of leading organizations and continues to reach out and connect with others. We want to join forces specifically to raise awareness of the success of our work as well as educate our members about the work and resources of these significant groups that will help members in their personal and professional development. Additionally, we collaborate with these organizations for the greater good because collectively we have a more powerful voice, are better educated and have more influence in the political culture to keep alternative and complementary care viable as a CHOICE for wellness.



ACEP – Association for Comprehensive Energy Psychology members are dedicated to exploring, developing, researching and applying energy psychology methods to alleviate human suffering, enhance human performance and access human potential. Energy psychology (EP) is a family of integrative approaches to psychotherapy, coaching and healthcare treatment rooted in mind-body healing traditions that are up to 5,000 years old. www.energypsych.org



AHNA – The American Holistic Nurses Association serves as a bridge between conventional health-care and complementary/alternative healing practices. www.ahna.org



HEARTMATH – The HeartMath mission is to facilitate a fundamental shift in health, well-being and consciousness. www.heartmath.org; www.glcoherence.org



HOLISTIC CHAMBER of COMMERCE – The Holistic Chamber of Commerce was created to be a bridge to new solutions for everyone who would like to learn more about complementary, integrative, holistic and eco-friendly options and solutions, as well as a resource for Holistic and Eco-friendly professionals and practitioners. www.holisticchamberofcommerce.com



HTWF – Healing Touch Worldwide Foundation, Inc. is a non-profit 501(c)(3) corporation established in 1997 by the Healing Touch Program founder, Janet L. Mentgen, RN, BSN, HNC, HTCP/I to receive and distribute funds to assist, encourage and advance the philosophy, objectives and techniques of Healing Touch. www.htwfoundation.org



HUMANITY'S TEAM – Humanity's Team is an international spiritual movement whose purpose is to communicate and demonstrate the timeless truth that We Are All One, with God and life... Humanity's Team was created by the spiritual author Neale Donald Walsch, author of the Conversations with God series of books. www.humanitysteam.org



JEAN WATSON'S CARING SCIENCE – Caring Science expands and deepens the conventional model of medical science, offering a unitary world view of the connectedness of all. www.watsoncaringscience.org



SHIFT NETWORK – The Shift Network empowers a growing global movement of people who are creating an evolutionary shift of consciousness that in turn leads to a more enlightened society, one built on principles of sustainability, peace, health, and prosperity. www.theshiftnetwork.com



VOICE for HOPE – Voice for HOPE's purpose is to provide leadership and strategic vision to focus the energy of the "natural" health constituency on the national health reform effort. www.voiceforhope.org



Community Connections is a collection of volunteer opportunities offering active participation to all in the general HT community and specifically to HTPA members. It is the avenue through which HTPA members can get involved in Special Interest Projects like HT service to the military and disaster response or even general volunteer opportunities.

Purpose of Community Connections

As healers, we have a natural ingrained longing and desire to be of service to reduce discomfort and enhance the quality of life of our fellow human beings locally and globally. Many in our HT community and HTPA membership would like to give back through volunteer service. As a result of conducting several surveys within our HTPA membership and the HT community at large, it has come to our attention that there is a significant number interested in volunteering their expertise in several different ways. Through the structure of HTPA's Community Connections, we will formulate and offer a variety of diverse volunteer service opportunities.

How to Get Involved in Community Connections

Go to the HTPA web page, click on the Community Connections tab and fill out your application to become part of the Community Connections Volunteer Bank. On the application, you will be able to indicate your skills and Special Project Interests. HTPA will send notifications of volunteer opportunities as they become available.



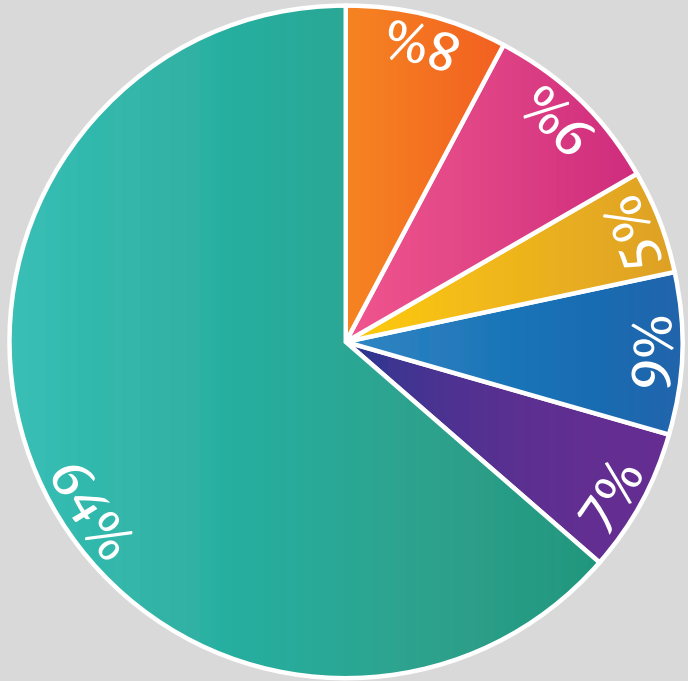
"Volunteers do not necessarily have the time; they have the heart."

—Elizabeth Andrew

Statistics - A year in Review

HTPA Dollars Spent 2014

Income = \$388,531 Expenses = \$356,083



- Liability Insurance \$225,436
(flow through cost of premiums)
- Community Support \$24,141
(monthly chat, forum, newsletter, website)
- Professional Development \$30,177
(monthly interviews, workshops)
- Conference \$17,751
(outreach participation at conferences)
- Membership Recruitment \$31,952
- Administration \$26,626

Operating Capital = \$32,448

HTPA Members

as of May 1, 2015

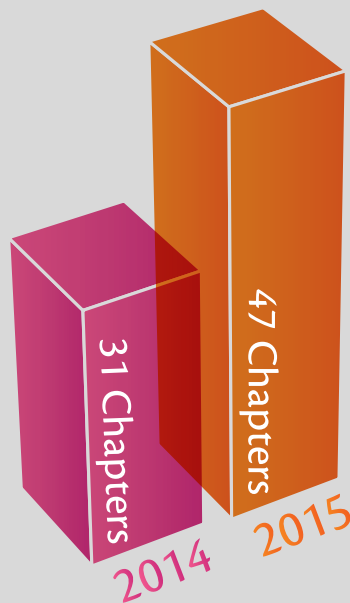


1,679

Active Members

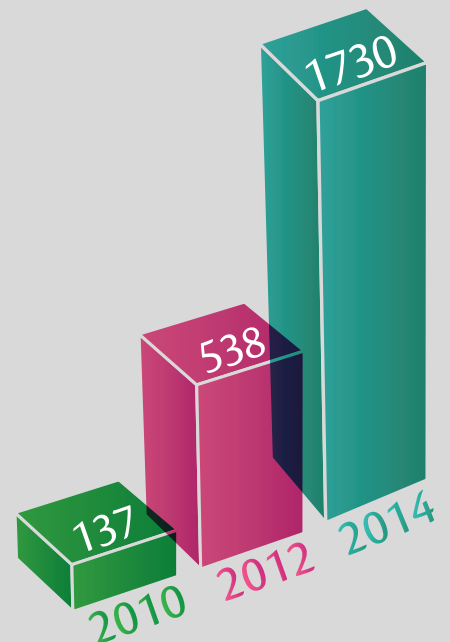
HTPA Chapters

as of May 1, 2015



Liability Insurance Participants

includes HTPA and EMPI Members



2015 Mapping Our Growth

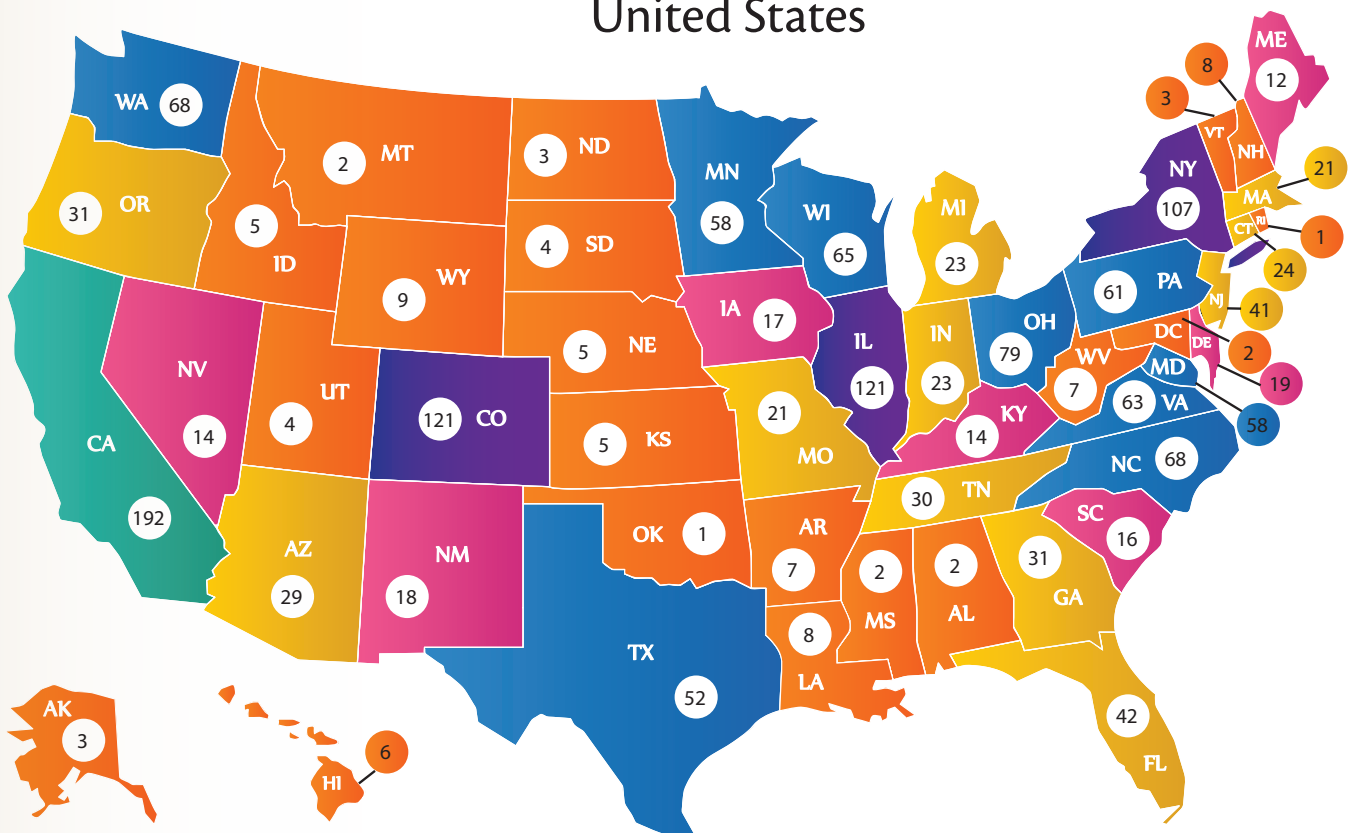
HTPA Active Members - as of May 1, 2015



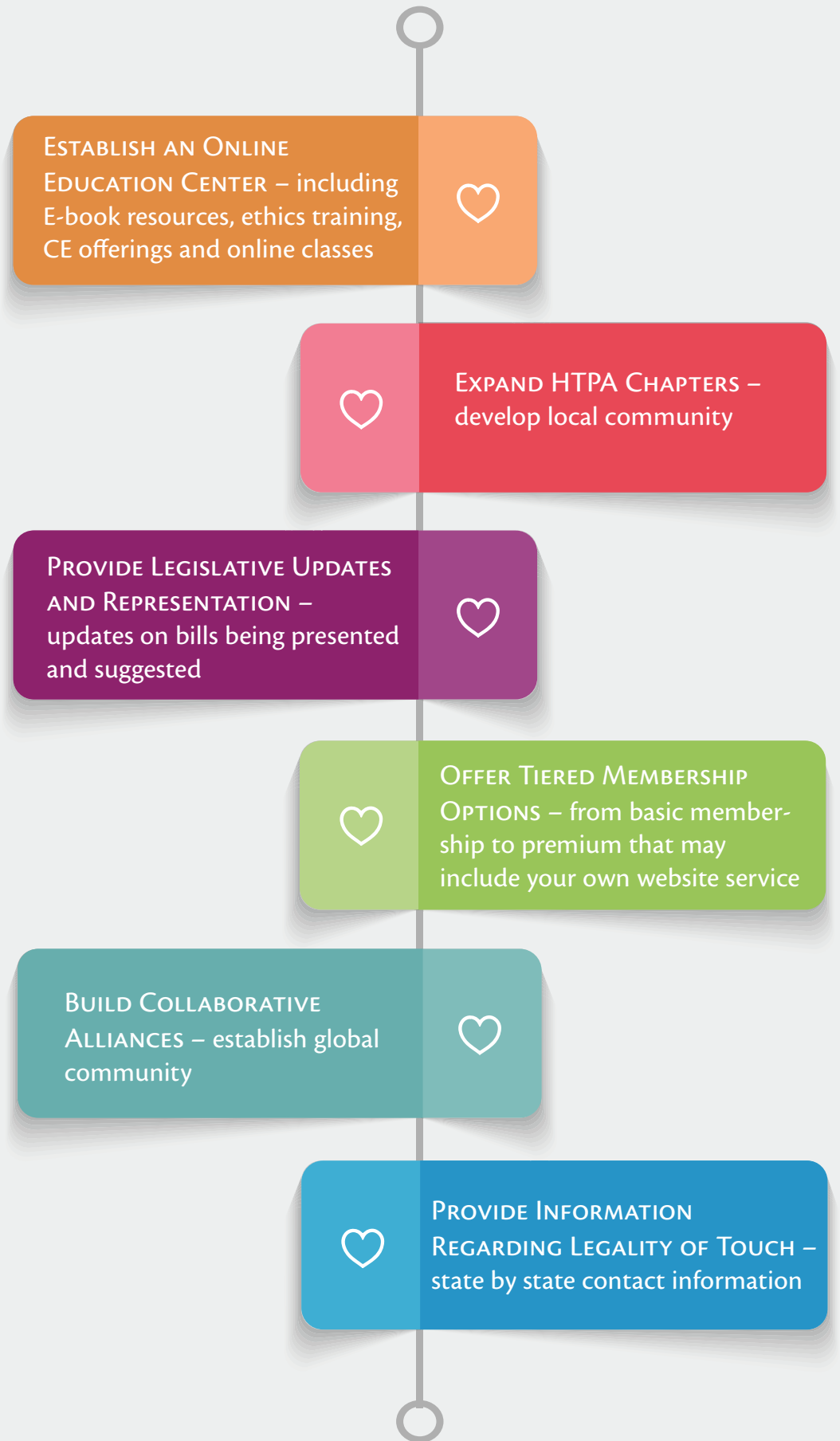
Other International Members
 17 Australia
 1 Great Britain



United States



Visions for the Future



Here to Serve You

THE HTP STAFF PROVIDES MANY BEHIND THE SCENES SERVICES FOR HTPA MEMBERS.

Let me take a moment to acknowledge the staff at Healing Touch Program. Lisa and Chris Gordon, Cynthia Hutchison, Margaret Nies, Sue Walker, Billy and Matt Courtney, Ann Darmstetter, Jennifer Lazik, Erin Harris, Kay Sims and Karin Ogren. I know just a list of names is not easy to read through, but these are not just names. These are individuals that make and take time for HTPA, our members and for me. Whenever I have needed it, they have been there and I thank you.

I'd also like to thank just a few more: Holli Brown, Gail Cox, Irene Bigot and Danielle Leblanc from the HTPA Insurance Initiative Committee. Melinda Chichester, who kept the HTPA Chapter information flowing. And finally, all the Chapter Leads who in their very own communities, month by month, continued to meet together to keep HT and HTPA active and inspired during this transition.

I'm so grateful.

- Dawn



Lisa Mentgen-Gordon
CEO



Dawn Warnaca
Acting HTPA Executive
Director



Cynthia Hutchison
Educational Program Director



Chris Gordon
General Manager



Margaret Nies
Project Manager



Ann Darmstetter
HTPA Liaison/Certification



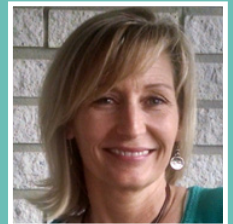
Kay Sims
Independent Class Manager



Erin Harris
EMPI Administrator



Jennifer Lazik
HTP Class Manager



Rachal Fries
Accountant



Billy Courtney
Graphic Design



Sue Walker
Integrative Care Program
Manager



Karin Ogren
Administrator



Matt Courtney
Web Master

Email your questions to info@HealingTouchProgram.com. You can also reach us at 210-497-5529.
Our office hours are 9:00 am - 5:00 pm CST Monday through Friday.

Thank You

Without YOU, our Members, Volunteers, Chapter Leads and Supporters, HTPA would not exist. We are here to support you!

TIME FOR TAKE OFF

Changing the planet, one home at a time –
MAKING A HEALER IN EVERY HOME a reality.



15439 Pebble Gate, San Antonio, Texas 78232
(210) 497-5529 • (210) 497-8532 Fax
info@HTProfessionalAssociation.com
www.HTProfessionalAssociation.com

