

Creating Together

2019 Annual Report for the Healing Touch Professional Association





From Amelia's Desk...

(*your* Executive Director)

Dear you,

I'm reflecting on the artistry of the Healing Touch professional - the students who learn with open heart; the apprentices who bring themselves into sacred commitment with the work; our professional community who do the work across many wellness settings. I'm reflecting inspired. I'm reflecting in awe. I'm reflecting with gratitude. The art that I'm referring to is the art that awakens and changes the World. Our art demands to be seen, to be honored, to be valued. This is our work for 2019 growth in visibility, in impact, and in appreciation.

Last year, our theme was about supporting your practice foundation. We did this through a creative set of homegrown trainings and professional offerings. Our Mastery Course (Free to all our members) covers many of the primary "considerations" of being in private practice. This course offers suggestions on pricing, valuation of services, packages; it shared some workflow ideas and offered you scripts you can use for your consultations. The goal was to empower you to feel like "you got this!" as you both begin a new practice or revisit and evolve the one that you have. We instituted a new grant to help you exhibit at fairs, conferences, and events - to help raise awareness of your local healing presence. We created the Facebook community that has allowed for communications and sharing. We visited San Diego for our first Community Day.

Time keeps on and with that comes opportunities. As previously mentioned, this year I'm intuiting the need for refinement, for beauty and for dreaming ways in which we can continue to support your success and your passion. I know that we need to continue to foster new, creative ways in which to make Healing Touch known and the HTPA is here to support you, our students and practitioners, in being known across your local communities.

In 2019, we are putting significant focus in outreach support, relationship building, community building, and continuing to offer impactful (and accessible) business support through advanced energy education, and creative resources.

I love seeing all of the colors of our work fly into the World and it's a joy and privilege to work on behalf of you and your service. I am excited to hear from you and invite you to contact me with your ideas, curiosities, or questions. I always enjoy hearing from you!



In service of your Service,

Amelia Vogler, BA, MS, HTCP/I
HTPA Executive Director

I don't know what your destiny will be, but one thing I do know: the only ones among you who will be really happy are those who have sought and found how to serve.

-Anonymous

HTPA Vision

Healing Touch Practitioners are fully recognized as vital professionals across all aspects of healthcare and wellness.

HTPA Mission

To provide exceptional professional support to Healing Touch Practitioners and Students that includes personal and professional growth, advanced energetic training, community development, business support, giving members a voice and a means to actively participate in the future of Healing Touch and Integrative Healthcare.

HTPA Purpose

HTPA

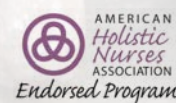
- is the collective voice for our Members and actively supports our professional presence globally.
- supports healer development.
- supports its members in the creation and management of a successful healing practice through business development tools and education.
- is a strong supportive community for its members.
- provides collective representation in health care and legislation for practitioners of Healing Touch and Energy Medicine.
- adheres to and promotes adherence to the Healing Touch Program Standards of Practice and Code of Ethics.

The Healing Touch Professional Association is an integral part of the Healing Touch Program.

The Healing Touch Professional Association strives to inspire the personal growth and professional development of every student and practitioner of Healing Touch. Healing Touch Program offers the highest quality, standardized, ANCC accredited education.



Accreditations and Endorsements



HTPA Vision for Professional Development

We dream big here at the Healing Touch Professional Association and these are the visions that we are holding for our community:

- Students feel completely supported by our community and feel empowered to ask questions and express their needs.
- Apprentices successfully bridge their healing education to a formal practice.
- Practitioners fill their practices with the perfect clients.
- Practitioners are recognized as **respected and essential** holistic professionals.
- Practitioners and Instructors have and use professional marketing and support materials.
- Practitioners and Instructors are empowered advocates for Healing Touch.
- The Healing Touch Community is a thriving, supportive place for all students, practitioners, and instructors.
- Healing Touch Practices are run by ethical, safe, and professional standards.
- **All individuals** in our community feel welcomed, respected, and supported.

Our Fourfold Focus

Your membership offers you access to a variety of professional community programs that are intended to support the following four areas of your practice.



Community Conversations

Engaging conversations to grow and deepen your Healing Touch practice (whether your practice is in a hospital setting, a private clinic, or volunteer community work).



Energy Medicine in the Spotlight

Insightful interviews or trainings with thought leaders in the field of Energy Medicine researchers, practitioners, and speakers.



Business Support

Various trainings and materials to support the business aspects of your practice. This includes engaging interviews, on-demand trainings, and professional materials.



Partner Bridge

Access to energy-medicine and business-related programs that partners offer. Our bridge keeps you connected to the larger communities in holistic health, energy medicine, and wellness.

In 2018, we added a new partnership with the University of Arizona's: Andrew Weil 's Center for Integrative Medicine and are able to offer discounts through select coursework for our members.



THE UNIVERSITY OF ARIZONA

Andrew Weil Center
for Integrative Medicine

Practice Protection

1,068 Members take of our Liability Insurance through our partnership with Energy Medicine Professional Association (EMPA). EMPA liability insurance provides comprehensive coverage. If you are named in a lawsuit, an experienced attorney will represent you. Whatever the outcome, this policy pays for legal fees, court costs, and any judgments involving claims or allegations as outlined in the coverage description.

EMPA Liability insurance will . . .

- Pay for accidents that cause injury to your clients such as slip and fall
- Pay for negligence due to misconduct or lack of skills
- Protect you from suits involving libel, slander or invasion of privacy
- Cover claims made against you for damage or injury resulting from a product you used on a client
- Cover damage to your rented workspace
- Cover legal defense costs if you are sued
- Fulfill your professional responsibility to your client

We invite you to explore the benefits of having liability insurance for your practice. Visit the HTPA website for more information www.htprofessionalassociation.com

Energy Medicine
Professional Association

2018 HTPA Highlights

MASTERY COURSE – REFINE YOUR LIGHT

244 HTPA Members took advantage of the Mastery Course that was launched this year. It took close to 8 months to create and is still evolving to stay current and relevant. This course is FREE for all of our HTPA members.



“As a newby to HTP let me say ‘thank you’ for sharing you perspective [in the Mastery Course]. I see myself in many of the points you make and it’s best to know up front how to recognize and curtail the places I’d call hurdles.”

-Felicia M.
Healing Touch Student

MODULE 1: EXPLORING YOUR PASSION: THE PATH OF THE PROFESSIONAL

Take an overview look at the many paths that a professional practitioner can take. Discover different types of practice models for inspirations as you build your perfect practice. Decide your practice goals and how to build a business around your strengths.

MODULE 2: EMBODYING A PROFESSIONAL HEALING PRACTITIONER

Harness the power of manifestation and purposely build the practice you want. In this module, envision your practice, your office setting, and support you in deepening your knowledge of creating and holding a sacred container.

MODULE 3: FINANCING YOUR PRACTICE

Discover more about the energetic exchange of money: What should I charge? How to create an offer and packages? How do I get paid (logistics)? What type of investments can I consider upfront (bank accounts, website internet, phone, booking service, computer, email service, insurance, accountant)?

MODULE 4: MARKETING YOUR PRACTICE

Learn how to effectively market and sell your services. Understand and evaluate various marketing channels and the skill of niching. Discover the Empathy Map to better understand your potential clients and how to share your message so they will hear you. Create your “What Do You Do” statement that gets people to want to learn more about your services.

MODULE 5: FILLING YOUR PRACTICE

Discover solid examples of how to fill your practice using presentations and written marketing paths (including referrals and social media). This module provides essential techniques on how to provide consultations and present an intro.

MODULE 6: MANAGING RISK

Learn the three must have Risk Management plans you need for your professional practice. We cover professional liability insurance, informed consent and ethics.

MODULE 7: RESOURCES

The intention of this section is to provide additional resources that can be useful for you as you begin your practice.

SHOWCASE YOUR LIGHT: EXHIBITION GRANTS

This was a great year for our HTPA & HTWF Exhibition Grant!

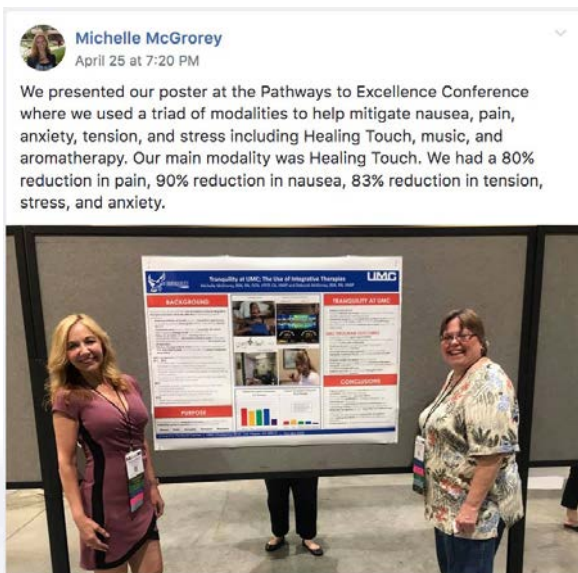
This grant supports practitioners, students, and instructors' participation at local and regional conferences as exhibitors. This grant provides a beautiful packet of materials and money to support your promotional of Healing Touch and your personal practice (or practices – if more than one individual is sharing the booth).

The goals are:

- to educate local communities about Healing Touch
- to allow Healing Touch Program's presence in charitable and community-events
- to allow practitioners to support their own practices
- to increase the visibility of the Healing Touch Worldwide Foundation

In 2018, practitioner exhibited at the MGS Annual Conference in Minnesota; a Touched By Cancer event in South Dakota; and the XpandFest in North Carolina. Over 100 treatments were given during these events! That's 100 people touched by Healing Touch and the visibility and outreach extended beyond.

To learn more or apply for this special grant, go to Grant's area of the HTPA Website.



SHARE YOUR LIGHT: FACEBOOK COMMUNITY

A community that shares together grows together. We introduced our new private Facebook community as a platform for open dialog. You will find discounts and program announcements. You can also ask practice questions, share healing requests, funny memes, and silly comments. We've enjoyed seeing pictures of chapter meetings; hearing stories of community gatherings; celebrating awards; and answering your questions! It may be small step in bridging some of our communication gaps, but it's been a great start at reducing the numbers of e-mails and helping to get you timely information.

Keeping strong channels of communication open is so important to us! So, member's hop on Facebook and join the conversation!

CELEBRATE YOUR LIGHT: COMMUNITY DAY RETREAT

Amelia Vogler (HTPA Executive Director) and John Westmoreland (Musician) travelled to beautiful San Diego to share in a day of ceremony, togetherness, new technique, and a beautiful Healing Touch exchange with John's soothing live music!

Our HTPA Community Day retreats are a great way to bring your community together, celebrate the specialness of Healing Touch, and honor the healer within!

In the words of our attendees:

The experience was both delightful because of being together with everyone in our HT community and healing for me personally. We givers always seem to be challenged to seek out and receive care for ourselves, for our healing, health, and well being. It was a wonderful experience to have a day together specifically designed for self-care.

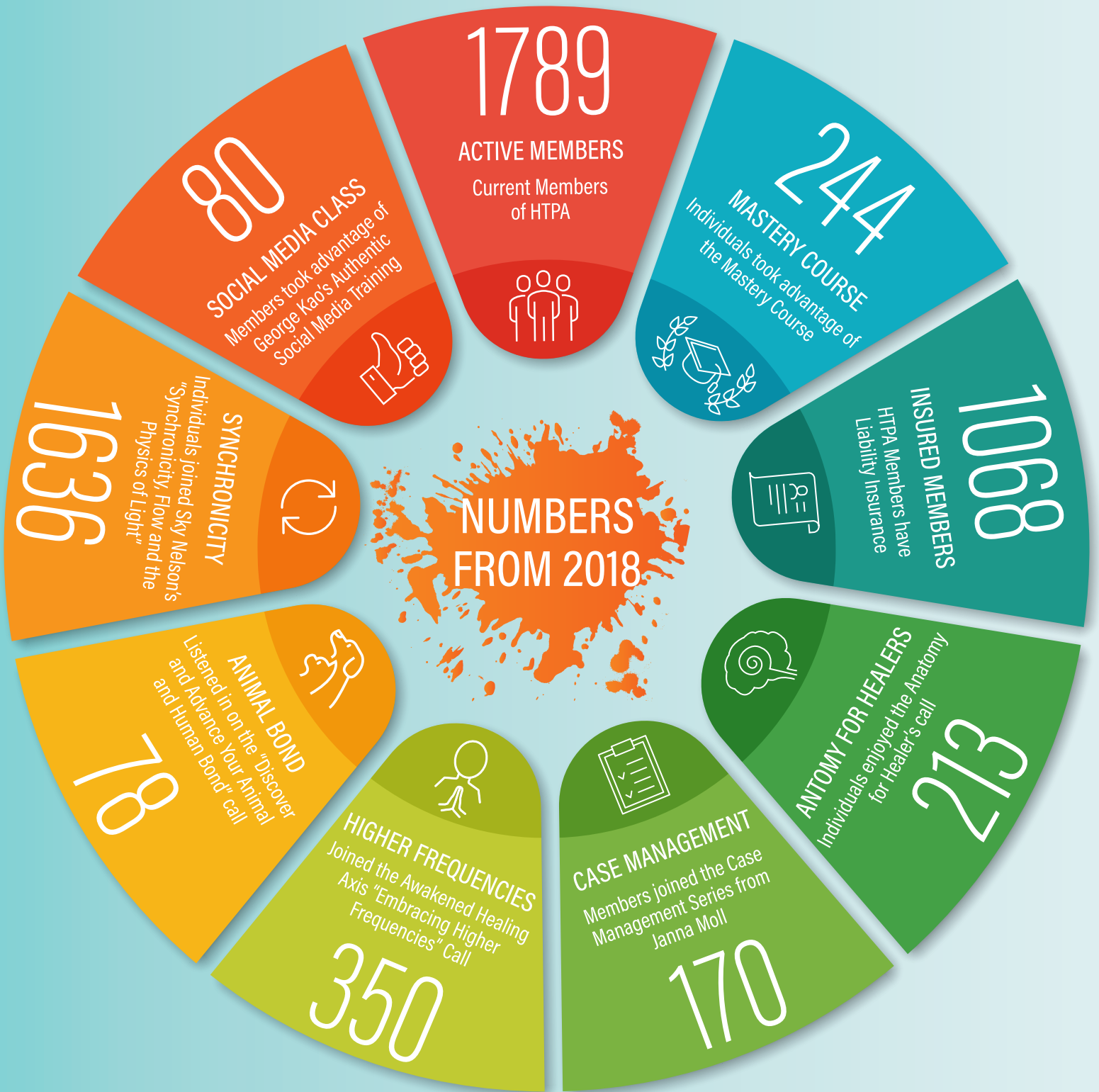
I could feel palpably the support we have through Amelia, HTPA, and each other. The bonds we've developed among each other were strengthened through the events of the day.



Amelia and John are heading to Albany, NY for our 2019 Community Day Retreat!

Where are we going in 2020? Is it to you???

Statistics - A Year in Review



Professional Resources and Membership Benefits



COMMUNITY PROGRAMS

Scheduled programs for advanced education or business support that aim to build proficiency in the field and your professional impact in your local communities.



MEMBER LIABILITY INSURANCE FOR HEALERS

Affordable insurance for US members and risk management education



MEMBER'S PRIVATE FACEBOOK GROUP

A member's only space where you can find Chapters updates; practice discussions; inspiration and healing requests; and announcements.



HTPA Newsletter

Delivered in your email inbox the newsletter includes what's new, what's coming and what our members are involved in



LOCAL CHAPTERS

Build a local community with a chapter. HTPA offers newsletters, activities, custom branding, and community conversations.



ENERGY MEDICINE IN THE SPOTLIGHT

Join our advanced energy medicine program that includes interviews, trainings, and conversations with thought leaders in the field of Energy Medicine.



ANNUAL REPORT AND MEMBERSHIP MEETING

An accounting of accomplishments, growth progress and vision(s) for the future through both of these avenues



PROFESSIONAL DEVELOPMENT & BUSINESS SUPPORT

HTPA offers guidance and continuing education to keep members up to date in a profession that is new and growing rapidly



MEMBER DIRECTORY

Only available to HTPA Members for networking, mentorship, consulting and community-building



MEMBER DISCOUNTS

Member discounts on classes, workshops, and conferences. Membership discounts available for International, Elder, and Student Memberships

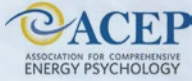


HTWF GRANTS

Grant funding through HTWF for Service to the Military and Exhibiting in local events

Professional Alliances

We would like to take time to acknowledge the HTP and HTPA professional alliances and growing network. These affiliate organizations are becoming key partners in helping to support our community and we intend to continue to foster dynamic and mutually-beneficial relationships for professional development and community support.



ACEP - The Association of Comprehensive Energy Psychology is recognized as the largest organization that promotes research and application of Energy Psychology. www.energypsych.org



AHNA - The American Holistic Nurses Association serves as a bridge between conventional healthcare and complementary/alternative healing practices. www.ahna.org



CONSCIOUSNESS AND HEALING INITIATIVE (CHI) - wants to place health and healing at the center of our personal and global consciousness, in order to build healthier societies and sustainable stewardship of our planet. www.chi.is



ENERGY MEDICINE PARTNERSHIPS, INC. - Prepares clinicians, practitioners, specialists and instructors in Transform Your Life through Energy Medicine, Energy Therapy and Transitions Home Care at the Triangle Holistic Center. Affiliated with the Institute for CAM Studies and Akamai University providing Worldwide Online Training. www.energymedicinepartnerships.com



ENERGY MEDICINE PROFESSIONAL ASSOCIATION (EMPA) - is a professional association that offers useful resources and valuable protection. www.energymedicineprofessionalinsurance.com



ENERGY MEDICINE SPECIALISTS (EMS) - is a center of excellence in energy medicine, education and integrated health care. They offer advanced practitioner coursework for your energy medicine practice. www.EnergyMedicineSpecialists.com



HEALING TOUCH FOR ANIMALS® (HTA) - is a holistic program that influences the health and well-being of animals through energy medicine and intention. www.healingtouchforanimals.com



HEARTMATH - The HeartMath Institute facilitates a fundamental shift in health, well-being and consciousness. www.heartmath.org; www.gcoherence.org



HOLISTIC CHAMBER of COMMERCE - a resource for Holistic and Eco-friendly professionals and practitioners as well as those who like to know more. www.holisticchamberofcommerce.com



THE INSTITUTE OF SPIRITUAL HEALING AND AROMATHERAPY (ISHA) - offers two educational programs: Healing Touch Spiritual Ministry and a Certification in Clinical Aromatherapy. www.ishahealing.com



JEAN WATSON'S CARING SCIENCE - The Caring Science Institute expands and deepens the conventional model of medical science, offering a unitary worldview of the connectedness of all. www.watsoncaringscience.org



THRIVE ACADEMY - Thrive Academy teaches coaches, healers and holistic practitioners heart-based systems to get clients. It's their mission to create a huge wave of transformational leaders who change the world and get paid well for it.



VOICE for HOPE - Voice for HOPE's provides leadership and strategic vision that focuses the energy of the "natural" health constituency on the National health reform effort. www.voiceforhope.org

Thank You

The Healing Touch Professional Association wants to acknowledge you and thank you for your membership, community leadership, and professional contributions.

We recognize that without you HTPA would not be able to continue to create wonderful benefits and meaningfully adapt to the changing needs of our community.

We thank you and send blessings to you, your practice, and your community.



15439 Pebble Gate, San Antonio, Texas 78232
(210) 497-5529 • (210) 497-8532 Fax
info@htprofessionalassociation.com
www.htprofessionalassociation.com

